

## Transformer station type ST-T2/N1U

rated power 630 or 800 kVA

for rated upper voltage 6kV or 10kV or 10-6kV



**HOMOLOGATION  
SIGN:  
GE-65/13  
GE-66/13**

The transformer station type ST-T2/N1U is a device designed for use in underground mining in excavations with no explosion hazard or in conditions with no methane explosion hazard and designated as class A coal dust explosion hazard.

The transformer station ST-T2/N1U is equipped with a power protections against short-circuits, overloads and lowered insulation resistance with installed transformer: 630kVA or 800kVA and rated upper voltage of 6 kV or 10 kV or (10-6) kV (switchable transformer) and lower rated voltage 525V AC. Electrical equipment of a transformer station at the upper rated voltage of 10kV and (10-6) kV is matched to 10 kV rated voltage.

### TECHNICAL DATA:

ingress protection	IP54
station rated power	630 or 800kVA
station upper voltage rated power	6 or 10 or 10-6kV
station lower rated voltage	525 V
frequency	50 Hz
no of phases	3
station upper and lower rated current	acc. to Tab.1
lower No of 500 V outlets	4 or 5
no of 230V outlets	2
dimensions	1790(1690 without cable outlets)x400x3035 mm (height x width x length)
weight for power 630/800 kVA	5200/4800 kg

**Tab. 1**

<b>Ugn (V)</b>	10 000		6000		10000-6000	
<b>Sn (kVA)</b>	630	800	630	800	630	800
<b>Ign (A)</b>	36	46	60	77	36-60	46-77
<b>Udn (V)</b>	525					
<b>Idn (A)</b>	695	880	695	880	695	880

**Legend:**

- Ugn (V)** – upper rated voltage
- Sn (kVA)** – station rated power
- Ign (A)** – station upper rated current
- Udn (V)** – lower voltage rated voltage
- Idn (A)** – lower rated current

**CONSTRUCTION**

The ST station housing is made of steel sheets and steel profiles. It is of a modular design and comprises of the following parts:

- The chamber 6/10 kV
- The transformer chamber ( with resin transformer)
- The chamber 500 V

The entire station can be moved at short distances (up to 50 m) on its support structure in form of sledges, using a stiff towing bar, appropriate for the weight of the station, on the platform with wheels, as well as on the bucket loader.

**DESCRIPTION OF OPERATION**

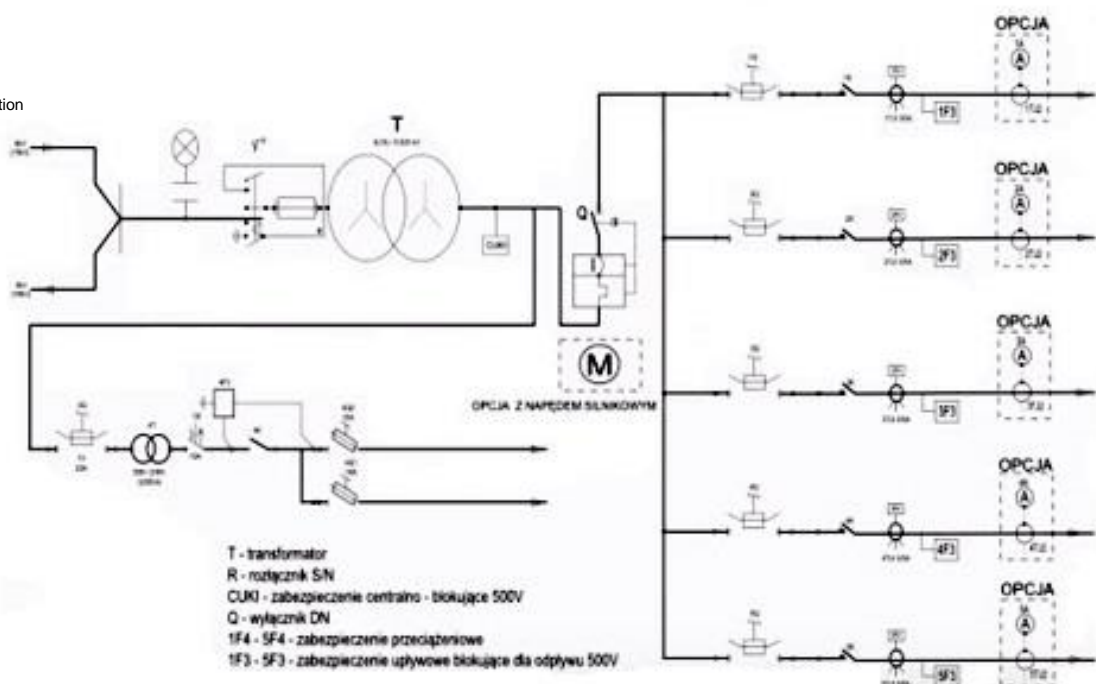
Turning-on and turning-off of the switch R and earthing switch is carried out manually by the lever. Transformer station has four or five 525 V outlets and two 230 V outlets designated to supply receivers. The outlets are equipped with power protections against short circuit and overload. Protection against electric shock is based on the central leakage protection.

Control of the outlets can be realized in two modes: LOCAL (on the front wall of the station) and REMOTE (from the external control system). Each 525 V and 230 V outlet are an independent apparatus compartment and has the ability for an individual switching off with the fuse disconnecter and the opening without any need to switch off the entire station.

**SCHEMATIC DIAGRAM**

**Legend:**

- T - resin transformer
- R - medium voltage switch
- CUKI - central leakage protection
- Q - circuit breaker
- 1F4-5F4 - overloading protection
- 1F3-5F3 - leakage blocking protection



Orders should be made in writing or by fax to the address:



Spółka z ograniczoną odpowiedzialnością  
Spółka komandytowa  
58-506 Jelenia Góra, ul. Wrocławska 15a  
tel. (+48 075) 64-57-950  
fax. (+48 075) 64-57-951  
e-mail: instal@instal-service.pl